

silo-safeline

Belt system for a fast and easy installation of oxygen barriers

silo-safeline secures your silage optimally and makes it easier to work with gravel bags.



EASY

- easy handling
- securely fixes the silage film in position with a minimum amount of effort
- drastically reduces time and efforts needed compared to tires – both when installing the barrier and when covering the silo

SAFE

- no more pieces of wire from old tires in your forage
- no risk of damaging the film, as the belts are extremely tear-resistant and the edges of the stainless steel plates are rounded
- ensure that the belts have no direct contact with the ground to provide best-possible sealing – for a safe oxygen barrier, even after the silo is opened
- ensures that the gravel bags are safely fixed on the silo – even on the slopes



FLEXIBLE

- individually adaptable
- fits any silo
- suitable for all silage gravel bags with handles



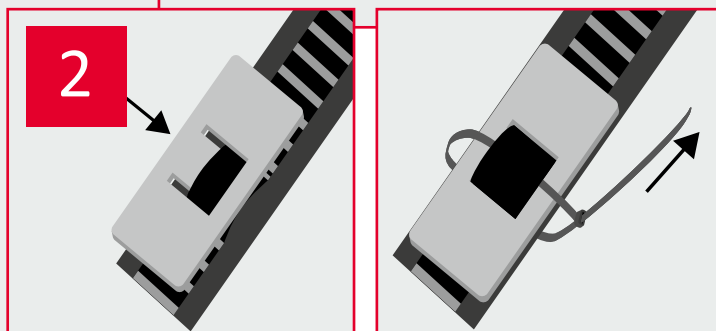
As perfect addition to our **silo-safeline**, use our **harvest INTERNATIONAL® siloschutzgitter** – silage protection net and **harvest INTERNATIONAL® silosack** – silage gravel bags.

How to use it

1. Install **silo-safeline** on the silo, keeping it approximately 150 cm from the ground, if you are using a 120 cm silage gravel bag (e. g. **harvest INTERNATIONAL® silosack**).

Shorten **silo-safeline** to the appropriate size and heat-seal the edges (using a lighter).

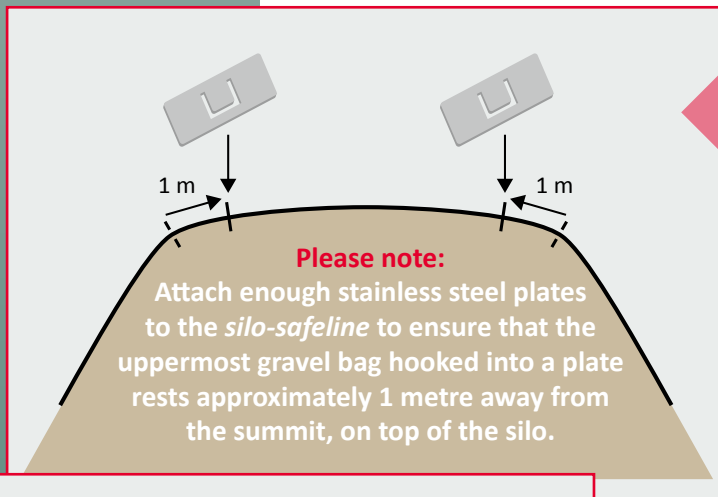
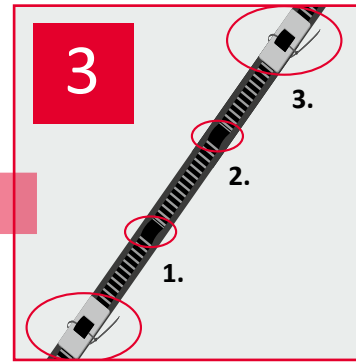
2. Attach stainless steel plate to the lowermost handle of the **silo-safeline** and fix it with a cable tie (included).



At a glance

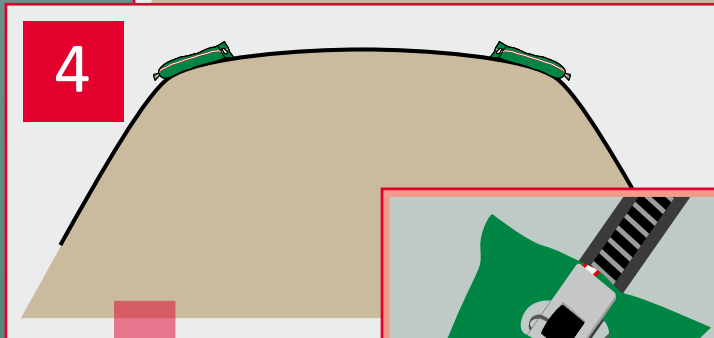
- easy handling
- no risk of damaging the film
- for a better sealing and secure oxygen barriers
- suitable for all silage gravel bags with handles

3. Fix another stainless steel plate to every third handle of the belt.

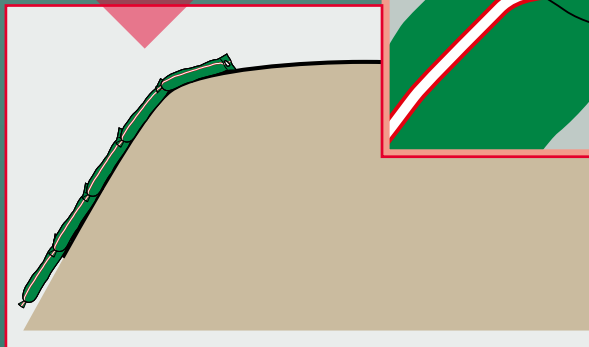


Please note:
Attach enough stainless steel plates to the *silosafeline* to ensure that the uppermost gravel bag hooked into a plate rests approximately 1 metre away from the summit, on top of the silo.

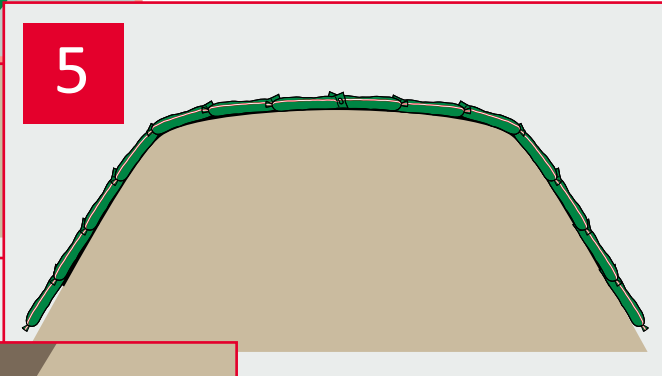
If you're using a different size of silage gravel bags, adjust the distance between the stainless steel plates accordingly.



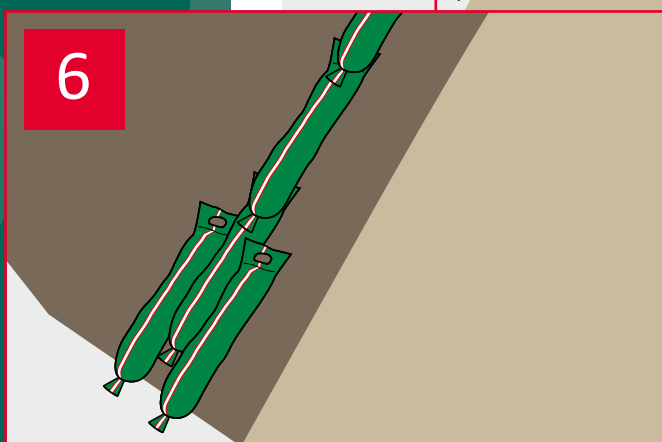
4. Hook the silage gravel bags into the upper stainless steel plates on both sides of the silo, then attach the other silage gravel bags accordingly until you have hooked a gravel bag to all the stainless steel plates previously attached to the belt.



5. Put additional silage gravel bags onto the *silosafeline* on the upper part of the silo to further fix the coverage.



6. In order to protect your silo as well as possible, we recommend putting another gravel bag on both the left and right side of the lowermost gravelbag to keep up the pressure despite the slopes.



Watch the video at www.jbs-silage.de.